

# TSW-1060

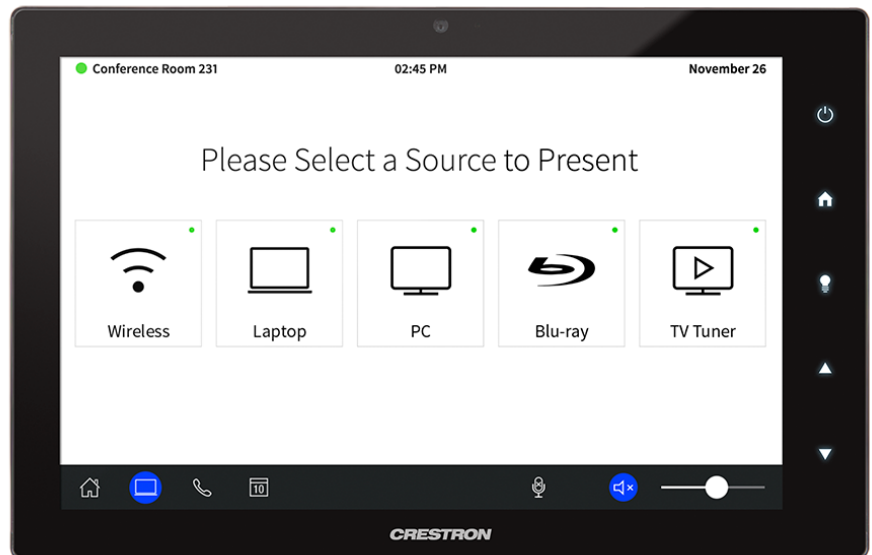
## 10.1" Touch Screen

- > Ultra clean, modern appearance
- > Thin profile and compact footprint
- > Affordable and easy to install
- > 10.1" widescreen active-matrix color display
- > 1280 x 800 WXGA display resolution
- > Capacitive touch screen technology
- > Multi-touch capable
- > Smart Graphics® performance
- > Backlit soft-touch capacitive buttons
- > Any/all button hide feature
- > Auto-brightness control
- > Voice recognition capability<sup>[1,2]</sup>
- > H.264 or MJPEG streaming video display
- > Built-in 5 MP H.264 IP camera<sup>[2]</sup>
- > Built-in microphone and speakers<sup>[2]</sup>
- > Rava® SIP intercom and phone technology<sup>[2]</sup>
- > Native Sonos® app
- > Crestron Fusion® room scheduling<sup>[4]</sup>
- > Built-in PinPoint™ beacon<sup>[2,5]</sup>
- > Customizable audio feedback
- > Built-in web browsing<sup>[1]</sup>
- > On-screen multi-language keyboard
- > Customizable screensaver
- > Single-wire Ethernet connectivity
- > PoE or PoE+ network powered (refer to specifications)
- > US, UK, or European electrical wall box mounting
- > Lectern mount over a rectangular cutout
- > Retrofit and masonry mounting options available<sup>[6]</sup>
- > Multi-surface and ADA compliance mounting options available<sup>[3]</sup>
- > Tabletop and swivel mount options available<sup>[3]</sup>
- > 5 RU rack mount option available<sup>[3]</sup>
- > Available in smooth black or white finish

### Advanced Touch Screen Control

A Crestron® touch screen offers an ideal user-interface for controlling all the technology in your home, boardroom, classroom, courtroom, or command center. Touch screens simplify and enhance the way you use technology, doing away with those piles of remote controls, cluttered wall switches, disparate smartphone apps, and cryptic computer screens. For controlling audio, video, lighting, shades, HVAC, security, and other systems, Crestron touch screens are fully-customizable with easy-to-use controls and icons, true feedback and real-time status display, live streaming video, voice recognition, web browsing, and a full-featured media player for an enhanced multiroom entertainment experience.

With its clean, contemporary design highlighted by edge-to-edge glass and stunning HD color graphics, the Crestron TSW-1060 touch screen makes an elegant statement on any wall, tabletop, lectern, or equipment rack.



Perfectly at home in the most contemporary residence or modern office building, its high-tech good looks underline its power for simplifying everyday tasks and functions throughout any facility.

The TSW-1060 delivers the ultimate touch screen experience in an unobtrusive, space-saving design. It features a brilliant, high-definition 10.1 inch capacitive touch screen display with Smart Graphics® and 5 soft-touch buttons. PoE connectivity and a range of mounting options make installation a breeze for both new and retrofit applications. Additional advanced features include the abilities to control any function using voice commands, view security cameras and other video sources, communicate using built-in video intercom and phone capabilities, manage meeting room scheduling, browse the Internet, and enjoy full access to your Sonos® Home Sound System.<sup>[1]</sup>

### Smart Graphics®

Crestron touch screens use Smart Graphics to deliver the ultimate user experience *and* the ultimate value by enabling the creation of dynamically rich user interfaces with incredible efficiency and unparalleled functionality. Using Smart Graphics, programmers can swiftly integrate fluid gesture-driven controls, animated feedback, rich metadata, embedded apps and widgets, and full-motion video for a deeply engaging and ultra-intuitive touch screen experience.

Crestron Smart Graphics offers these enhancements and more:

- Cool-looking graphical buttons, sliders, knobs, and gauges that are intuitive and fun to use
- Kinetic effects to enhance the feeling of realism, with lists and toolbars that scroll with momentum at the flick of a fingertip
- Drag-and-drop objects that snap into place, offering an easy way to switch sources
- Dashboard widgets to personalize the touch screen with clocks, weather, news, and other information<sup>[1]</sup>
- A power-saving screensaver that allows display of time, temperature, and other text content at a reduced brightness level

# TSW-1060 10.1" Touch Screen



TSW-1060-W-S – Shown in White

- Customizable themes allowing a completely different look and feel for every user, event, or season
- Fully-developed SmartObjects® that enable sophisticated control over complex devices with minimal programming
- A consistent look and feel across multiple touch screens of varying sizes

## Soft-Touch Buttons

The TSW-1060 includes five backlit, soft-touch capacitive buttons for quick access to commonly used functions. These buttons are pre-labeled with icons for “Power”, “Home”, “Lights”, “Up”, and “Down” functions. Each button is programmable via the [control system](#) for custom functionality, and any unused button can be hidden by simply turning off its backlight.

## Auto-Brightness Control

To ensure optimal visibility under varying lighting conditions, the TSW-1060 includes a built-in light sensor, which regulates the brightness of the display and button backlighting according to the ambient light level in the room. Separate auto-brightness settings are provided for the display and buttons to allow each to be adjusted or defeated as needed.

## Voice Recognition

Some things are easier *said* than *done*, so why not just *say* what you want and let Crestron *do* it for you? With built-in voice recognition, the TSW-1060 provides the ability to use spoken commands to control virtually anything. Voice recognition can be used to quickly turn devices on or off, select and play a specific media title or playlist, change the channel, choose a lighting scene, lock the doors, arm the security system, or enter a password. Simply say a command and Crestron does the rest.<sup>[1,2]</sup>

## Streaming Video

High-performance streaming video capability makes it possible to view security cameras and other video sources right on the touch screen. Native support for H.264 and MJPEG formats allows the TSW-1060 to display live streaming video from an IP camera, a streaming encoder (Crestron [CEN-NVS200](#), [DM-TXRX-100-STR](#), or similar<sup>[3]</sup>), or a [DigitalMedia™ switcher](#). Video is delivered to the touch screen over Ethernet, eliminating the need for any extra video wiring.



TSW-1060-B-S with TSW-1060-TTK-B-S Tabletop Kit

## Rava® SIP Intercom

[Rava](#) SIP Intercom Technology enables hands-free VoIP communication with other Rava-enabled touch screens and door stations. Rava works over Ethernet, supporting 2-way intercom, video intercom, and paging without requiring any special wiring. VoIP phone capability is also possible through integration with a SIP-compatible IP phone system or SIP server, allowing hands-free telephone functionality complete with speed-dialing, caller ID, custom ringers, and other enhancements. Built-in echo cancellation affords full-duplex performance for clear, seamless voice communication using the TSW-1060's integrated microphone and speakers.<sup>[2]</sup>

## Built-in Camera

A 5 megapixel camera is built into the TSW-1060 to support video intercom and room monitoring capabilities. This feature allows individuals to communicate both verbally and visually between two touch screens, or between one touch screen and a Rava-compatible video door station. It can also be used to visually monitor any room securely using an H.264 compatible decoder (Crestron [DM-TXRX-100-STR](#), [DM-RMC-100-STR](#), or similar<sup>[3]</sup>) or a third-party video monitoring system. When not needed, the camera feature can be turned off programmatically through the control system. A “no-camera” model is also available.<sup>[2]</sup>

## Sonos® App

Merging technologies from [Sonos](#) and Crestron brings a whole-house music experience like no other. From any touch screen in the house, a family can effortlessly browse for tracks, artists, or playlists using all the services available from Sonos and instantly play them in any room using Sonos wireless speakers or a Crestron [Sonnex®](#) Multiroom Audio System. The Sonos app runs natively on the TSW-1060, enabling enhanced control of Sonos products as part of a complete Crestron system. The app checks for updates nightly so it's always current.<sup>[1]</sup>

## Room Scheduling

The TSW-1060 can provide an invaluable productivity tool for corporate enterprises and other organizations that use [Crestron Fusion®](#), Microsoft® Outlook®, Google Calendar™, or another calendaring application to schedule meetings and manage rooms. Mounted on the wall outside each room, the TSW-1060 allows anyone to see at-a-glance if the room is

# TSW-1060 10.1" Touch Screen

available or in use, and to view details about the current meeting. A swipe of the finger reveals the room's entire schedule for the day, displaying upcoming meetings and open time slots, and allowing the room to be reserved right on the spot.

Room scheduling functionality is enabled on the TSW-1060 using the built-in room scheduling application, which syncs directly over the network with Crestron Fusion, Microsoft Exchange, Office 365®, Google Calendar, or G Suite™. A Room Availability Hallway Sign (model [SSC](#) or [SSW](#)<sup>[3]</sup>) can be added for enhanced visibility.<sup>[4]</sup>

## PinPoint™ Beacon (Coming Soon)

The built-in PinPoint proximity detection beacon enhances the intelligence and personalization of a Crestron system by enabling a smartphone or tablet device to always know what room it's in. It works with the [Crestron App](#) or [Crestron PinPoint App](#), using Bluetooth® technology to determine when the mobile device is in or near the same room as the beacon, and signals the mobile app to automatically display the appropriate controls and information for that location.<sup>[2,5]</sup>

## Web Browsing

Using its built-in web browser, the TSW-1060 provides quick access to online program guides and other web-based services at the touch of a button, allowing enhanced touch screen control of DVRs and other appliances without having to pick up a separate tablet or smartphone. If a device can be controlled or managed through a web browser, it can be integrated into the Crestron system through the TSW-1060. Of course, the web browser may also be used to simply browse the Internet, check traffic conditions, or look up a recipe.<sup>[1]</sup>

## On-Screen Keyboard

Typing in passwords, URLs, and text searches is facilitated using the on-screen multi-language keyboard.

## Multi-Touch Support

The TSW-1060's capacitive touch screen affords enhanced capabilities for browsing web pages using multi-touch gestures.

## Audio Feedback

Customized audio files can be loaded to add another dimension to the touch screen graphics using personalized sounds, button feedback, and voice prompts.

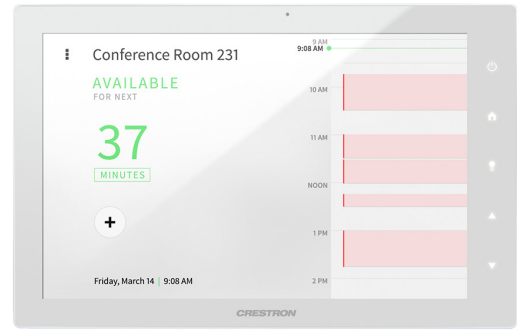
## Single-Wire Connectivity

A simple Ethernet LAN connection is all that is required to wire the TSW-1060, containing all control, video, intercom, and power signals within a single wire.

## Power over Ethernet

Using PoE technology, the TSW-1060 gets its operating power right through the LAN wiring. PoE (Power over Ethernet) eliminates the need for a local power supply or any dedicated power wiring. A PoE Injector ([PWE-4803RU](#)<sup>[3]</sup>) simply connects in line with the LAN cable at a convenient location. Crestron PoE switches ([CEN-SW-POE-5](#) or [CEN-SWPOE-16](#)<sup>[3]</sup>) may also be used to provide a total networking solution with built-in PoE.

*Note: Refer to the "Power" specifications for additional details.*



Room scheduling application

## Wall or Lectern Mounting Options

Using the bracket provided, the TSW-1060 is easily installed over a 2-gang or 3-gang electrical box, or a 2-gang European or UK electrical box. The same bracket allows for installation in a wooden lectern or podium over a rectangular cutout. When installed, the touch screen protrudes just 1/2 inch from the mounting surface and latches firmly into its mounting bracket leaving no visible screws for an ultra clean appearance. A security latch option is included to deter unauthorized removal of the touch screen.

Additional mounting options are afforded using the [TSW-UMB-60](#) Universal Mounting Bracket. By itself, the TSW-UMB-60 provides a post-construction solution for retrofitting the TSW-1060 into existing drywall. For pre-construction applications that don't require a back box, the TSW-UMB-60 can be used along with a [TSW-UMB-60-PMK](#) Pre-Construction Mounting Kit. Masonry and concrete applications are accommodated using the TSW-UMB-60 along with a [TSW-UMB-60-BBI](#) back box. The TSW-UMB-60 is compatible with [TSW-560](#), [-760](#), and [-1060](#) model touch screens, making it easy to change devices at any time.<sup>[6]</sup>

When installing the TSW-1060 in place of an older Crestron touch screen (APAD, CT-1000, LC-1000, TPS-4L, TPS-6L, TPS-2000L, or TPS-3100L), Crestron offers Retrofit Mounting Brackets ([TSW-60-RMB](#) series<sup>[3]</sup>), which facilitate replacement without having to tear out the old mounting hardware or patch the wall.<sup>[6]</sup>

For impenetrable surfaces, such as glass, granite, or marble, or for applications requiring ADA compliance, Crestron offers the Multi-Surface Mount Kit ([TSW-760/1060-MSMK](#)<sup>[3]</sup>). This option allows for attaching securely to virtually any smooth, flat surface without screws, providing an ideal solution for modern offices with glass walls or historically significant spaces where cutting and drilling is prohibited. It can also be mounted over a conventional electrical box. When installed, the touch screen is angled upwards at a 20° tilt to allow for mounting at an ADA approved height.

## Tabletop Option

Using the optional Tabletop Kit ([TSW-1060-TTK](#)<sup>[3]</sup>), the TSW-1060 becomes a stylish, freestanding touch screen that fits perfectly on a table, desk, or countertop. It can even be permanently attached to the surface using the optional Swivel Mount Kit ([TSW-560/760/1060-SMK](#)<sup>[3]</sup>).

## Rack Mount Option

The TSW-1060 can be mounted in a 19" EIA equipment rack using the optional Rack Mount Kit ([TSW-1060-RMK-2](#)<sup>[3]</sup>). When rack mounted, the touch screen occupies five rack spaces.



# TSW-1060 10.1" Touch Screen

## SPECIFICATIONS

### Touch Screen Display

**Display Type:** TFT active matrix color LCD  
**Size:** 10.1 inch (257 mm) diagonal  
**Aspect Ratio:** 16:10 WXGA  
**Resolution:** 1280 x 800 pixels  
**Brightness:** 400 nits (cd/m<sup>2</sup>)  
**Contrast:** 950:1  
**Color Depth:** 24-bit, 16.7M colors  
**Illumination:** Edgelit LED w/auto-brightness control  
**Viewing Angle:** ±80° horizontal, ±80° vertical  
**Touch Screen:** Projected capacitive, 5-point multi-touch capable

### Buttons

**Hard Keys:** (5) Projected capacitive pushbuttons, backlit w/auto-brightness control, per-button show/hide (backlight enable/disable), pre-labeled with icons for "Power", "Home", "Lights", "Up", and "Down"  
**Reset:** (1) Miniature pushbutton on rear panel for hardware reset

### Graphics Engine

Crestron Smart Graphics, multi-language web browser<sup>[1]</sup>, multi-language on-screen keyboard, screensaver, single scalable streaming video window, native Sonos app<sup>[1]</sup>, native room scheduling application<sup>[4]</sup>, setup and diagnostics via web browser or onscreen UI

### Languages

**Smart Graphics:** Arabic, Chinese (Simplified), Chinese (Traditional), Czech, Danish, Dutch, English (UK), English (US), Finnish, French, German, Greek, Hebrew, Hungarian, Italian, Japanese, Korean, Norwegian, Polish, Portuguese, Portuguese (Brazilian), Romanian, Russian, Slovak, Spanish, Swedish, Thai  
**On-Screen Keyboard:** Arabic, Chinese (Simplified), Croatian, Czech, Danish, Dutch, English (UK), English (US), Finnish, French (Canada), French (Switzerland), German, Hebrew, Hungarian, Italian, Japanese, Norwegian Bokmal, Polish, Portuguese, Russian, Serbian, Spanish, Swedish, Turkish  
**Voice Recognition:** Afrikaans (South Africa); Chinese, Mandarin (China, Simplified); Chinese, Mandarin (Hong Kong, Simplified); Chinese, Mandarin (Taiwan, Traditional); Chinese, Yue (Hong Kong, Traditional); Czech (Czech Republic); Dutch (Netherlands); English (Australia); English (Canada); English (Generic); English (India); English (New Zealand); English (South Africa); English (UK); English (US); French (France); German (Germany); isiZulu (South Africa); Italian (Italy); Japanese (Japan); Korean (South Korea); Polish (Poland); Portuguese (Brazil); Russian (Russia); Spanish (Spain); Turkish (Turkey)  
**Web Browser:** Arabic, Bulgarian, Catalan, Chinese, Croatian, Czech, Danish, Dutch, English, Filipino, Finnish, French, German, Greek, Hebrew, Hindi, Hungarian, Indonesian, Italian, Japanese, Korean, Latvian, Lithuanian, Norwegian Bokmal, Pashto, Persian, Polish, Portuguese, Romanian, Romansh, Russian, Serbian, Slovak, Slovenian, Spanish, Swedish, Thai, Turkish, Ukrainian, Vietnamese  
**Room Scheduling**<sup>[4]</sup>: Chinese (Simplified), Chinese (Traditional), Danish, Dutch (Netherlands), English (US), English (UK), French, German, Hebrew, Italian, Japanese, Korean, Norwegian, Portuguese (Brazil), Portuguese (Portugal), Russian, Spanish, Swedish

### Memory

**RAM:** 2 GB DDR3L  
**Storage:** Firmware/Application: 4 GB Class 10 microSD card;  
System: 4 GB eMMC  
**Maximum Project Size:** 600 MB

### Communications

**Ethernet:** 10/100 Mbps, auto-switching, auto-negotiating, auto-discovery, full/half duplex, TCP/IP, UDP/IP, CIP, DHCP, SSL, TLS, SSH, SFTP (SSH File Transfer Protocol), IEEE 802.1X, SNMP, IPv4 or IPv6, IEEE 802.3at compliant  
**USB:** USB 2.0 host for room availability hallway sign<sup>[3,4]</sup>  
**Bluetooth:** Crestron PinPoint proximity detection beacon<sup>[2,5]</sup>

### Streaming Decoder

**Video Formats:** H.264 (MPEG-4 part 10 AVC), MJPEG  
**Audio Formats:** AAC stereo  
**Bitrates:** Up to 25 Mbps (20 Mbps maximum recommended)  
**Streaming Input Resolutions:** Up to 1920x1080@30fps  
**Streaming Protocol:** RTSP

### Streaming Encoder & Camera<sup>[2]</sup>

**Camera Resolution:** 5.0 MP  
**Field of View:** 50° horizontal  
**Video Format:** H.264 (MPEG-4 part 10 AVC)  
**Streaming Output Resolution:** 1280x720  
**Streaming Protocol:** RTSP, ONVIF discovery

### Audio

**Features:** Built-in microphone and speakers, Rava SIP Intercom, multi-language voice recognition<sup>[1,2]</sup>  
**Audio Feedback Formats:** MP3

### Connectors

**LAN PoE:** (1) 8-pin RJ45 connector, female, with 2 LED indicators; 10Base-T/100Base-TX Ethernet port and PoE+ PD port; Green and yellow LEDs indicate Ethernet port status  
**USB:** (1) USB Type A connector, female; USB 2.0 host port; For optional room availability hallway sign<sup>[3,4]</sup>

### Power

#### Power over Ethernet:

- IEEE 802.3at Type 2 compliant PoE+ PD (Powered Device);
- Normally requests 15 Watts from an 802.3at Type 2 PSE with LLDP advanced power management;
- With room scheduling and USB enabled, requests 18 Watts from an 802.3at Type 2 PSE with LLDP;
- Requests 30 Watts (PoE+ Class 4) from an 802.3at Type 2 PSE without LLDP;
- Requests 15.4 Watts (PoE Class 0) from an 802.3af (or 802.3at Type 1) PSE

# TSW-1060 10.1" Touch Screen

*Note: Enabling the USB port requires use of an 802.3at Type 2 PoE+ PSE.*

## Environmental

**Temperature:** 32° to 112° F (0° to 45° C)  
**Humidity:** 10% to 90% RH (non-condensing)  
**Heat Dissipation:** 44 BTU/hr

## Enclosure

**Construction:** Plastic, smooth black or white finish, edge-to-edge glass with black or white surround  
**Mounting:** Surface mount over a 2 or 3-gang US electrical box, 2-gang European (DIN 49073) electrical box, or 2-gang UK (BS 4662) electrical box; lectern mount over a 2-1/5" H x 3-3/4" W (56 mm H x 96 mm W) cutout; 1-3/8" (35 mm) minimum mounting depth; additional wall mount, surface mount, rack mount, and tabletop options available separately

## Dimensions

**Height:** 6.59 in (168 mm)  
**Width:** 10.23 in (260 mm)  
**Depth:** 1.52 in (39 mm)  
*Dimensions do not include the mounting bracket*

## Weight

23.9 oz (675 g)

## Compliance

UL Listed for US & Canada, IC, CE, FCC Part 15 Class B digital device

## MODELS & ACCESSORIES

### Available Models

**TSW-1060-B-S:** 10.1" Touch Screen, Black Smooth  
**TSW-1060-W-S:** 10.1" Touch Screen, White Smooth  
**TSW-1060-NC-B-S:** 10.1" Touch Screen without Camera, Microphone, or PinPoint™ Beacon; Black Smooth  
**TSW-1060-NC-W-S:** 10.1" Touch Screen without Camera, Microphone, or PinPoint™ Beacon; White Smooth

### Available Accessories

**TSW-1060-TTK:** Tabletop Kit for TSW-1060  
**TSW-560/760/1060-SMK:** Swivel Mount Kit for TSW-1060-TTK  
**TSW-UMB-60:** Universal Mounting Bracket for TSW-x60 Series  
**TSW-UMB-60-PMK:** Pre-Construction Mounting Kit for TSW-UMB-60  
**TSW-UMB-60-BBI:** Wall Mount Back Box for TSW-UMB-60  
**TSW-760/1060-RMB-1:** Retrofit Mounting Bracket – Converts APAD, CT/LC-1000, or TPS-2000L to TSW-760 or TSW-1060  
**TSW-760/1060-RMB-2:** Retrofit Mounting Bracket – Converts TPS-4L to TSW-760 or TSW-1060  
**TSW-1060-RMB-3:** Retrofit Mounting Bracket – Converts TPS-6L to TSW-1060  
**TSW-1060-RMB-4:** Retrofit Mounting Bracket – Converts TPS-3100L to TSW-1060

**TSW-760/1060-MSMK:** Multi-Surface Mount Kit for TSW-760 & TSW-1060

**TSW-560/760-RMK-2:** Rack Mount Kit for TSW-1060

**PWE-4803RU:** PoE Injector

**CEN-SW-POE-5:** 5-Port PoE Switch

**CEN-SWPOE-16:** 16-Port Managed PoE Switch

**CEN-NVS200:** Network Video Streamer

**DM-TXRX-100-STR:** HD Streaming Transmitter/Receiver

**DM-RMC-100-STR:** HD Streaming Receiver & Room Controller 100

**SSC:** Room Availability Hallway Sign, Ceiling Mount

**SSW:** Room Availability Hallway Sign, Wall Mount

**SW-FUSION-C-3:** Crestron Fusion® Cloud

**SW-FUSION-P-L:** Crestron Fusion® On-premises

### Notes:

1. Voice recognition, web browsing, weather information, Sonos app, and certain other functions require an Internet connection.
2. The camera, microphone, and PinPoint beacon (Bluetooth) are included on models TSW-1060-B-S and TSW-1060-W-S only. To ensure privacy, the camera, microphone, and Bluetooth transceiver can each be defeated programmatically at any time. For applications demanding an extra measure of privacy, Crestron offers models TSW-1060-NC-B-S and TSW-1060-NC-W-S, which have no physical camera, microphone, or Bluetooth transceiver installed.
3. Item(s) sold separately. Refer to each product's spec sheet for complete information.
4. Room scheduling functionality and USB support for the [SSC](#) or [SSW](#) hallway sign can be enabled using the native room scheduling application or the Room Scheduling SmartObject®. The SmartObject provides a UI similar to the [TSS-752](#) and requires Crestron Fusion. The native application features a newer, more customizable UI, and can be used with Crestron Fusion, or without Crestron Fusion via direct connection to MS Exchange, Office 365, Google Calendar, or G Suite. Refer to <http://www.crestron.com/fusion> for a list of other calendaring applications that are supported through Crestron Fusion. Using the native application, the TSW-760 must be designated exclusively for room scheduling use, which precludes use of certain other features and functions described in this spec sheet. The touch screen must be powered by a PoE+ power source when a hallway sign is connected via USB.
5. PinPoint beacon functionality will be enabled through a future update. When enabled, the TSW-1060 will provide an integrated, equivalent alternative to the standalone [PP-100](#) beacon. For more details, refer to the PP-100 spec sheet. Bluetooth technology is used solely for proximity detection and does not transmit or receive any control, multimedia, or personal data. PinPoint beacons are only visible to Bluetooth enabled devices that are specifically programmed and configured to work with your system.
6. The [TSW-UMB-60](#), [TSW-UMB-60-PMK](#), and [TSW-UMB-60-BBI](#) are all sold separately. The TSW-UMB-60 is also compatible with older [TSW-UMB-PMK](#) preconstruction mounting kits and [TSW-550-BBI](#) back boxes, allowing the TSW-1060 touch screen to be installed in place of a previous generation TSW-5xx series touch screen, or any other device that was originally installed using the a TSW-UMB-PMK or TSW-550-BBI, without modification to the wall. If replacing an APAD, CT-1000, LC-1000, TPS-4L, TPS-6L, TPS-2000L, or TPS-3100L device, use the appropriate [TSW-60-RMB](#) retrofit mounting bracket (sold separately).

This product may be purchased from an authorized Crestron dealer. To find a dealer, please contact the Crestron sales representative for your area. A list of sales representatives is available online at [www.crestron.com/salesreps](http://www.crestron.com/salesreps) or by calling 800-237-2041.

The specific patents that cover Crestron products are listed online at: [patents.crestron.com](http://patents.crestron.com).

Certain Crestron products contain open source software. For specific information, please visit [www.crestron.com/opensource](http://www.crestron.com/opensource).

Crestron, the Crestron logo, Crestron Fusion, DigitalMedia, PinPoint, Rava, Smart Graphics, SmartObject, SmartObjects, and Sonnex are either trademarks or registered trademarks of Crestron Electronics, Inc. in the United States and/or other countries. Bluetooth is either a trademark or registered trademark of Bluetooth SIG, Inc. in the United States and/or other countries. G Suite and Google Calendar are either trademarks or registered trademarks of Google Inc. in the United States and/or other countries. Microsoft, Office 365, and Outlook are either trademarks or registered trademarks of Microsoft Corporation in the United States and/or other countries. Sonos is either a trademark or registered trademark of Sonos, Inc. in the United States and/or other countries. Other trademarks, registered trademarks, and trade names may be used in this document to refer to either the entities claiming the marks and names or their products. Crestron disclaims any proprietary interest in the marks and names of others. Crestron is not responsible for errors in typography or photography. Specifications are subject to change without notice. ©2017 Crestron Electronics, Inc.

# TSW-1060 10.1" Touch Screen

